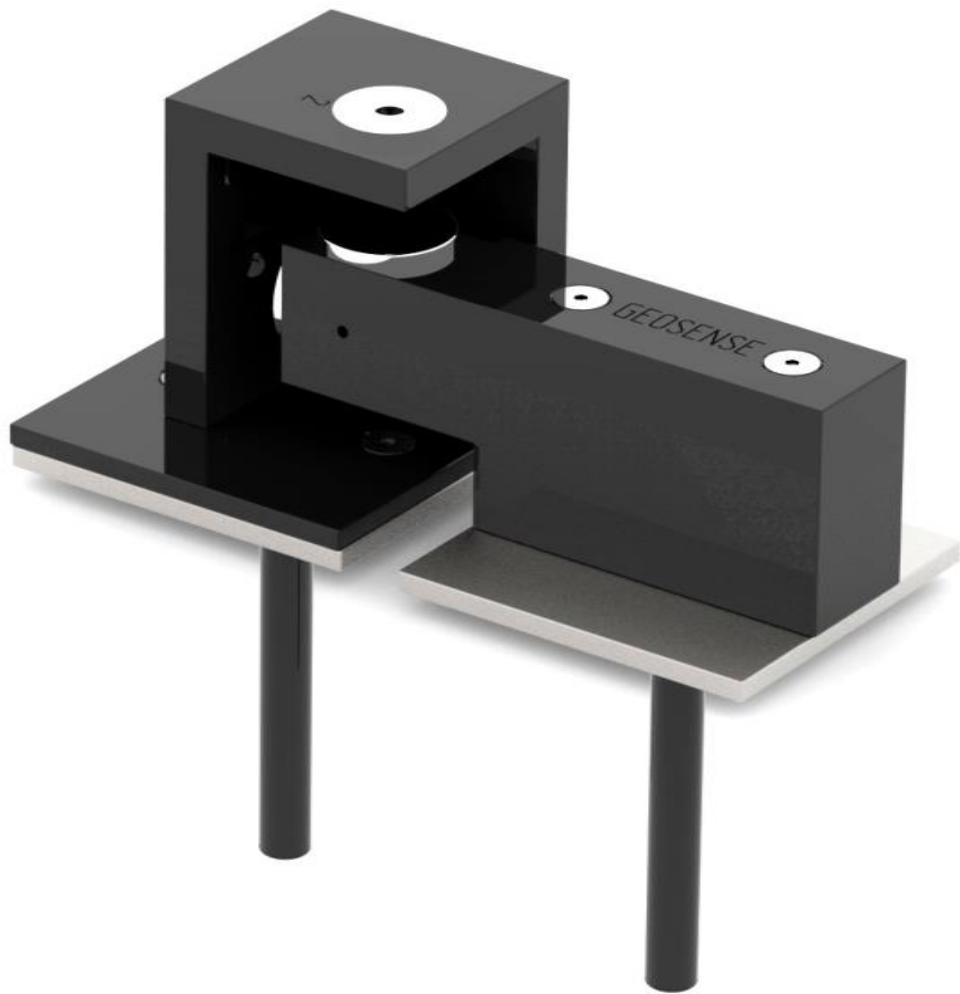


I  
N  
S  
T  
R  
U  
C  
T  
I  
O  
N  
  
M  
A  
N  
U  
A  
L

# MANUAL 3D CRACK METER



# Manual 3D Crack Meter Installation Manual

---

---

Although all efforts have been made to ensure the accuracy and completeness of the information contained in this document, Geosense Ltd reserves the right to change the information at any time and assumes no liability for its accuracy

## Table of Contents

1 MATERIALS LIST.....	1
2 INSTALLATION TOOLS.....	1
3 INSTALLATION PROCEDURE.....	1
4 TAKING READINGS WITH A DEPTH MICROMETER.....	4

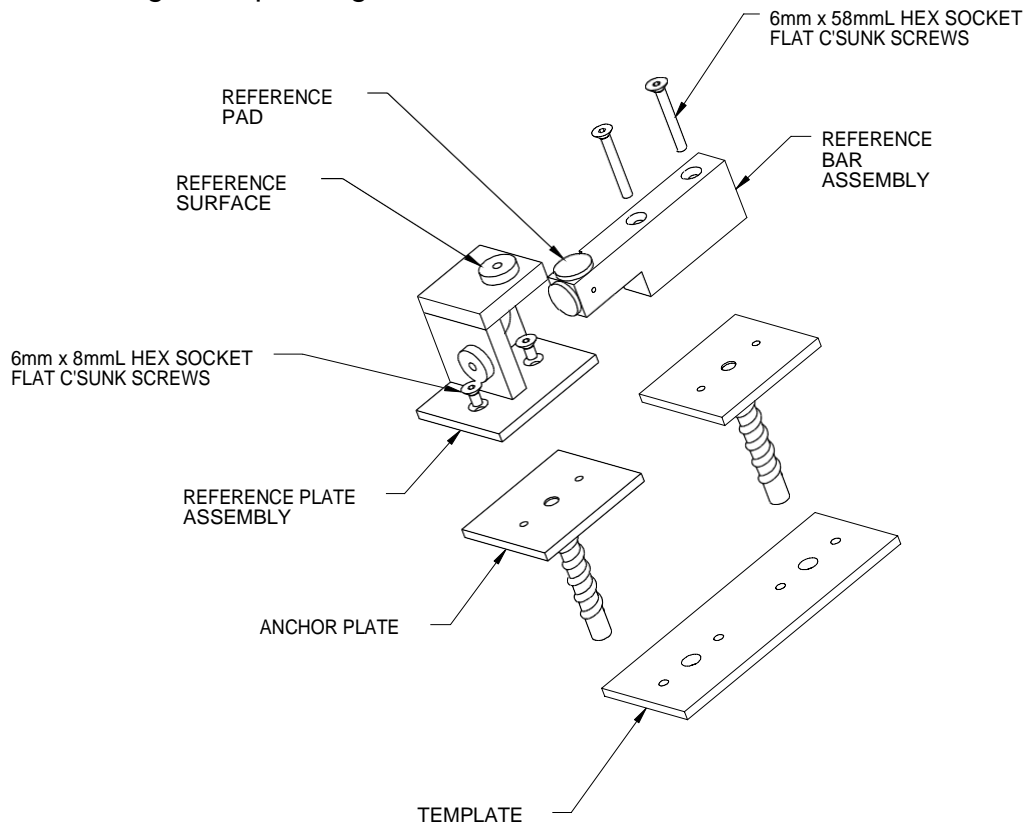
## Table of Figures

Figure 1: 3D Crack Meter Parts.....	1
Figure 2: Anchor Hole Placement.....	2
Figure 3: Bolt Anchor Plates to Template.....	2
Figure 4: Anchor Assembly.....	3
Figure 5: Axis Orientation.....	4

# 1 MATERIALS LIST

To follow is a typical list of the materials shipped for successfully installing a standard 3D Crack Meter:

1. (2) Groutable Anchor Plates
2. Reference Plate Assembly
3. Reference Bar Assembly
4. (2) 6mm x 58mmL C'SK socket head screws
5. (2) 6mm x 8mmL C'SK socket head screws
6. Install Template
7. Digital Depth Gage



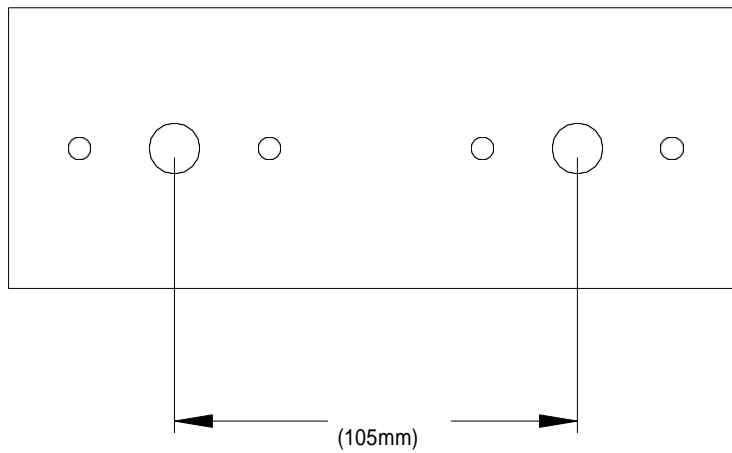
**Figure 1: 3D Crack Meter Parts**

# 2 INSTALLATION TOOLS

The following tools will be needed to successfully install the 3D Crack Meter:  
8mm spanner and metric 4mm Allen Key

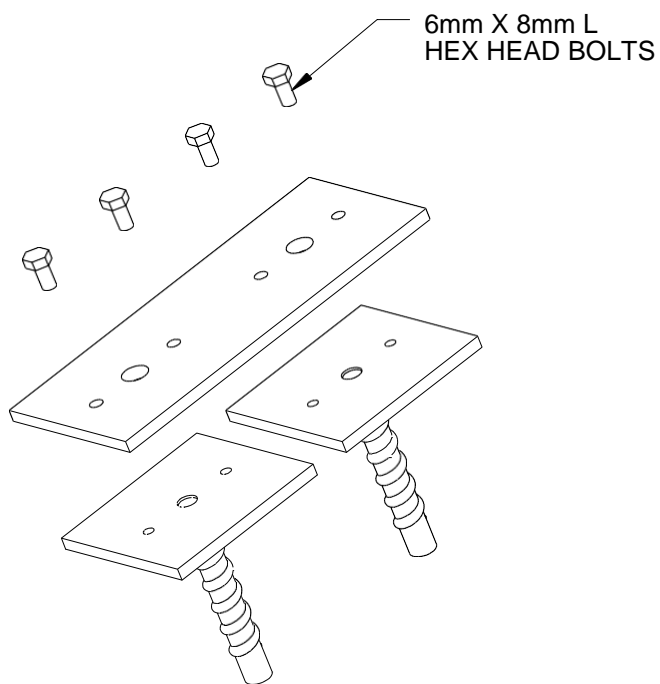
# 3 INSTALLATION PROCEDURE

1. Drill anchor holes for grouting Anchor Plates on either side of the crack to be monitored 105mm apart



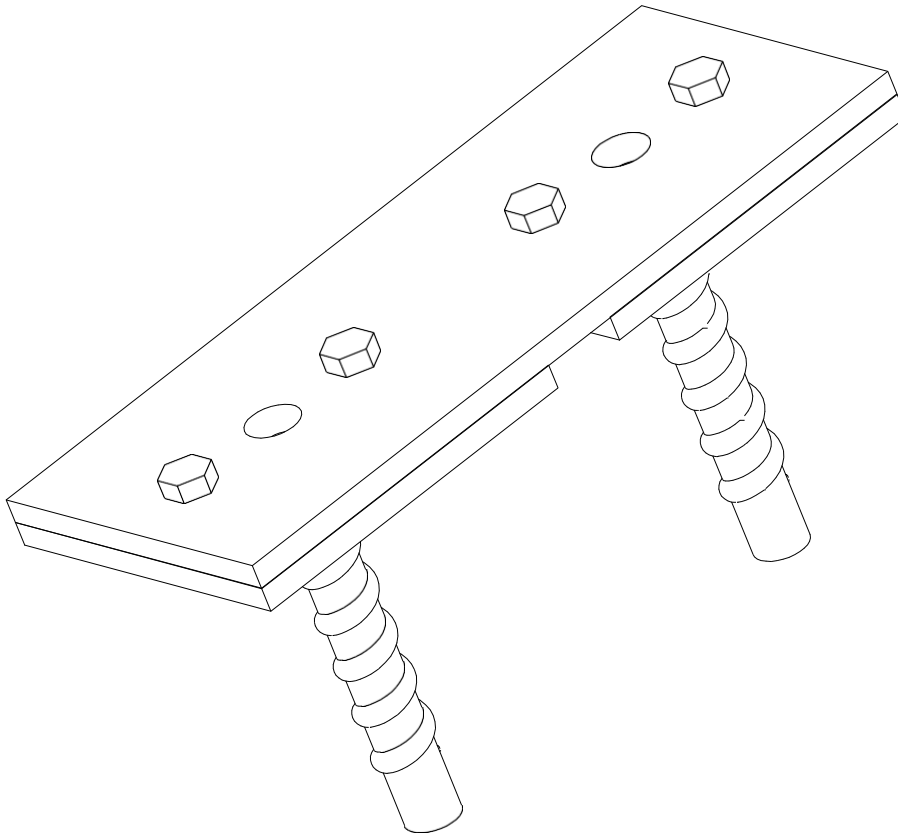
**Figure 2: Anchor Hole Placement**

2. Apply grease to the (4) 6mm x 8mmL hex head bolts



**Figure 3: Bolt Anchor Plates to Template**

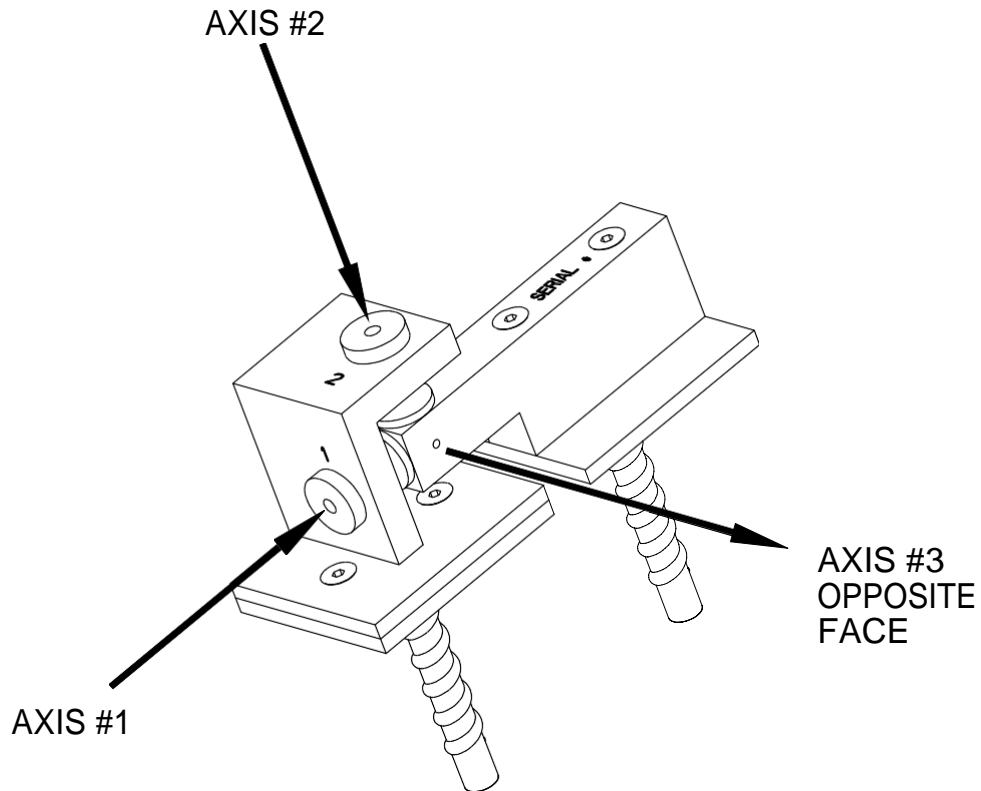
3. Bolt the Anchor Plates to the Template



**Figure 4: Anchor Assembly**

4. Fill the anchor holes with grout
5. Push the Anchor Assembly into the anchor holes, level, and then secure into place
6. Allow the grout to set
7. Remove the hex bolts and the template
8. Bolt the Reference Plate Assembly onto one Anchor Plate (refer to Figure 1)
9. Bolt the Reference Bar Assembly onto the other Anchor Plate (refer to Figure 1)
10. Take initial readings with the Digital Depth Gauge.

## 4 TAKING READINGS WITH A Digital Depth Gauge



**Figure 5: Axis Orientation**

1. Record the Serial Number of the 3D Crack Meter
2. Take out the Digital Depth Gage
3. Record the Axis number and then insert the Dial Depth Gage into the Axis Reference Surface guide hole and butt the Micrometer Base flat against the Axis Reference Surface (refer to Figure 1). **Make sure the end of the Extension Rod reaches the Reference Pad.**
4. Record the reading
5. Repeat steps 4-5 for each Axis